

INDUSTRIAL CENTRIFUGAL PUMPS



CONSTRUCTION



CHEMICALS



FIRE FIGHTING



RANGE OF PERFORMANCE

Flow rate up to 80l/min
Head up to 100m

LIMITS OF USE

Max fluid temperature up to 90°C
Max working pressure up to 10 bar

CONSTRUCTION FEATURES

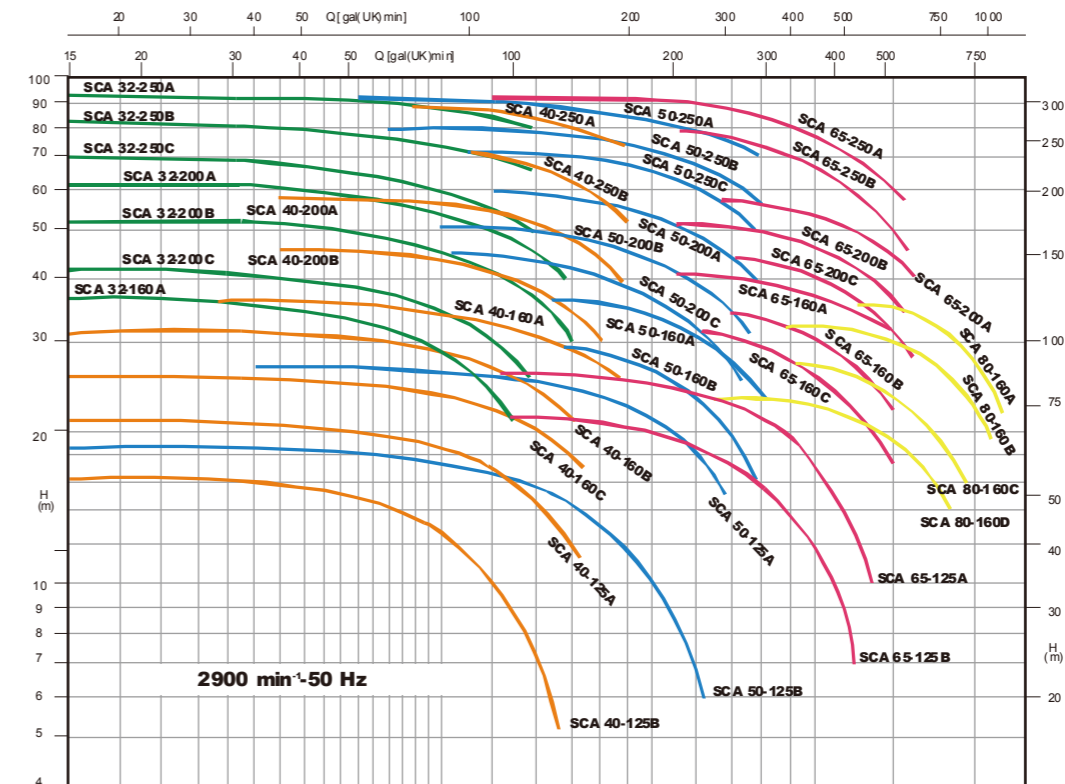
Pump Body: cast iron, with flanged suction and delivery and supplied with threaded counter flanged
Shaft: 45#steel/stainless steel
Impeller: cast iron impeller and bracket (on request)
Brass impeller available for all models
Motor: Two-pole, closed, self-ventilated induction
Insulation Class: B/F
Protection Class: IP55
Duty: continuously rated
Mechanical Seal: ceramic steatite
All pumps are available in the three-phase version: 230V/400V; 50HZ or 400/690V-50HZ for rating higher than or equal to 5.5 KW.

APPLICATION

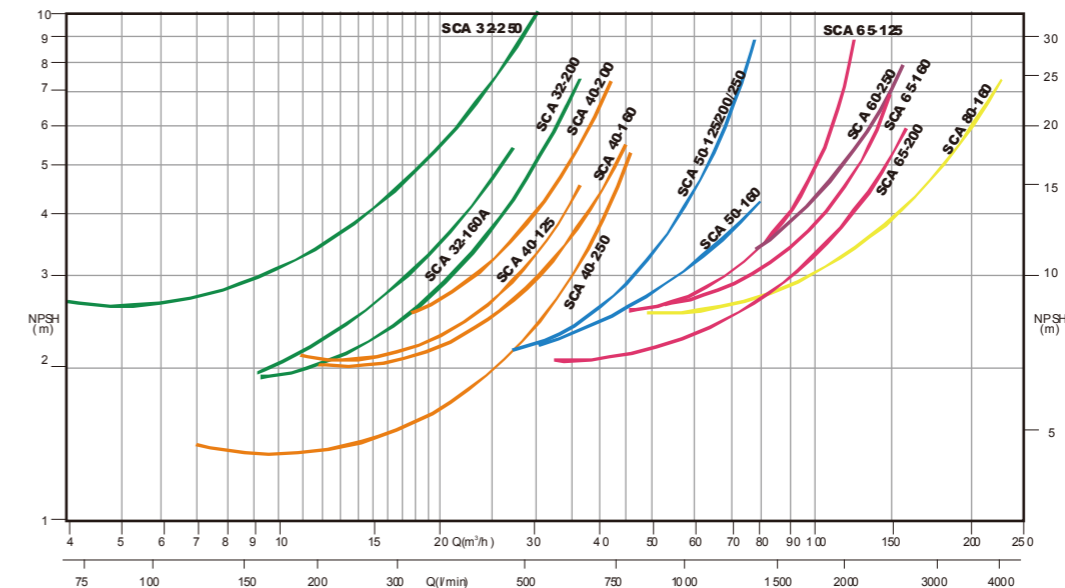
SCA series close coupled centrifugal pumps are with single impeller, which manufactured according to European standards En733; SCA series are very extended: the different performances curves allow a right choice of the optimal model following all kinds of specific demands in several fields as: watersupply for living uses; industrial uses and general water plants projects; water supply; spray irrigations and watering, pressure sets, heating and air-conditioning plants, any other use for liquid decanting.
The pumps must be installed in enclosed places, or at least protected against inclement weather.

SXA series are suitable for applications requiring high capacities with moderate flow; this pumps is single-stage, single-suction centrifugal pump in conformity with Din24255 standard. This pump is used for pumping clean water or liquids which the characteristic of chemical and physical is similar to water. It is applicable for plants, mine, city water supply, air-condition, firefighting system and irrigation.

SGA series stainless steel stamping pump are suitable for applications requiring high capacities with moderate flow; This pump is a single-stage, single-suction centrifugal pump in conformity with ISC2858-77 standard. Its main components are made with advanced technology and process, which could give high precision, smooth surface, high efficiency, low noise, little vibration and light weight. It is widely applied in petrochemicals, foodstuffs, drinkers, pharmaceuticals, electric power, textile, environmental protection, and water supply for high building etc.,



SCA



SCA series Close coupled centrifugal pump

with single impeller, which manufactured according to European standards En733; SCA series is very extended: the different performances curves allow a right choice of the optimal model following all kinds of specific demands in several fields as : watersupply for living uses; industrial uses and general water plants projects; water supply; spray irrigations and watering, pressure sets, heating and air-conditioning plants, any other use for liquid decanting. Cast Iron Pump Body, with flanged suction and delivery and supplied with threaded counterflanges; cast iron Bracket and Impeller (on requested bronze impeller available for all models); ceramic-graphite Mechanical Seal fitted on a stainless steel extension of the motor Shaft. Two-pole, closed, self-ventilated induction Electric Motor, suitable for continuous duty; insulation class F; Ip55 protection. All pumps are available in the three-phase version: 230/400V; - 50HZ or 400/690V -50HZ for rating higher than or equal to 5.5KW. The user must always provide electric protection. Max. Temperature of pumped liquid : 90°C; Max. Working pressure: 10 bar

SERIES SXA



SXA



CONSTRUCTION DETAILS

- Pump body: cast iron
- Impeller: cast iron
- Shaft: High tensile steel
- Shaft sleeve: stainless steel
- Support foot: carbon steel
- Applicable standard: DIN24255

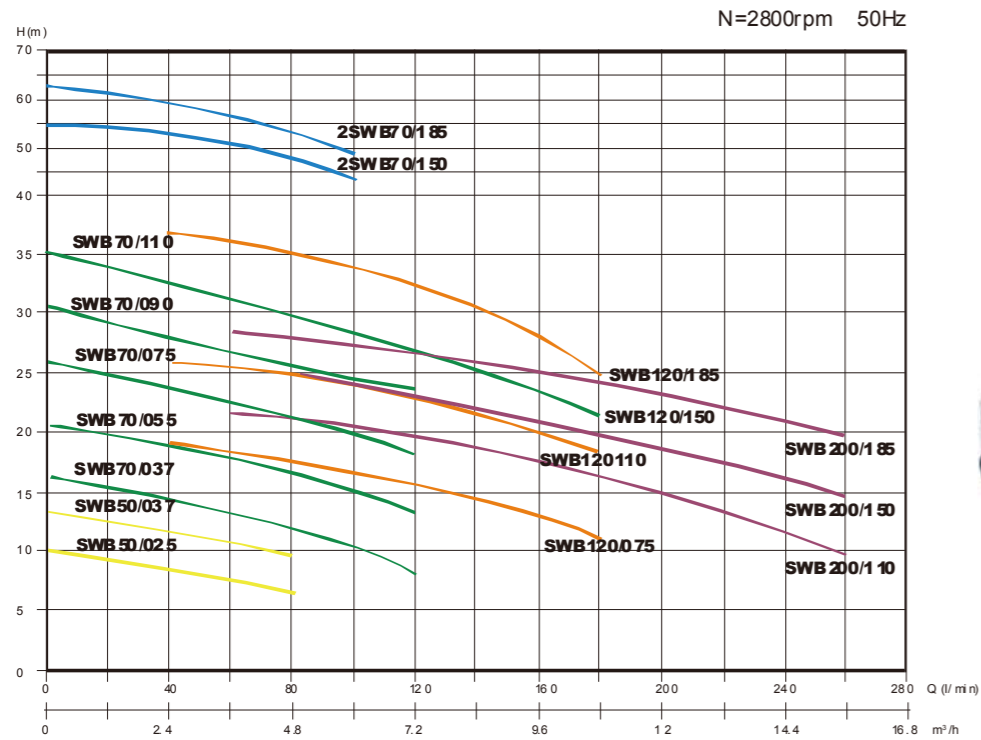
PERFORMANCE

- Speed available: 2900rpm
- Max. Capacity: 100L/S
- Max. Speed: 3500rpm (available under 60Hz)
- Working .temperature: -10°C — +105°C (means the fluid temperature)
- Operating Pressure: 1.0MPa(10Bar)

MAIN PART LIST AND MATERIAL IDENTIFICATION

PART NAME	MATERIAL NAME	CHINA	GERMANY	UK	JAPAN
		GB	DIN	BS	JIS
Pump body	Grey cast iron	HT200	GG20	Cr.180	FC20
	Nodular cast iron	QT450-10	GGG-40	Cr.500-7	FCD50
Impeller	Grey cast iron	HT200	GG20	Cr.180	FC20
	Bronze	ZCuSn5pb5Zn5		LG2	BC6
	Stainless steel	2Cr13	X20Cr13	420S37	SUS420JI
		0Cr18Ni9	X5CrNi189	304S15	SUS304
Shaft	Stainless steel	2Cr13	X20Cr13	420S37	SUS420JI
	Chrome steel	40Cr		En18S117	SCr4
Shaft Sleeve	Stainless steel	2Cr13	X20Cr13	420S37	SUS420JI
Casing ring	Grey cast iron	HT200	GG20	Cr.180	FC20
	Bronze	ZCuSn5pb5Zn5		LG2	BC6

MODEL	CAPACITY Q		HEAD H(M)	SPEED N(RPM)	POWER P(KW)		MOTOR SUPPLIED (KW)	EFF η(%)	NPSH R(M)	IMPELLER DIAMETER (MM)	PUMP NOZZLE (MM)		TAPE PIPE DIAMETER (MM)		WEIGHT (KG)
	M ³ /H	L/S			SHAFT	MOTOR					IN	OUT	IN	OUT	
	SXA32/13	9	2.5	24.5	2900	1.23	1.5	Y90L-22.2KW	49	1.8	Ø139	50	32	65	



SWB

SYMBOLS

SWB (2SWB) Series Stainless Steel Centrifugal pumps are suitable for clean media which are non-aggressive to stainless steel 304 or 316L. The pump casing, back-cover, impeller and pump shaft are in AISI304 or AISI316L, With Aluminum Casing motor, and motor bracket, NBR/Ceramic/Carbon graphite Mechanical seal. Max. Working pressure: 8 bar, and flow temp. -15°C ~ +80°C, Suction size : G1.25II , G1.5II , Discharge size : G1II ; Motor overload thermal protector for Single phase is available upon request

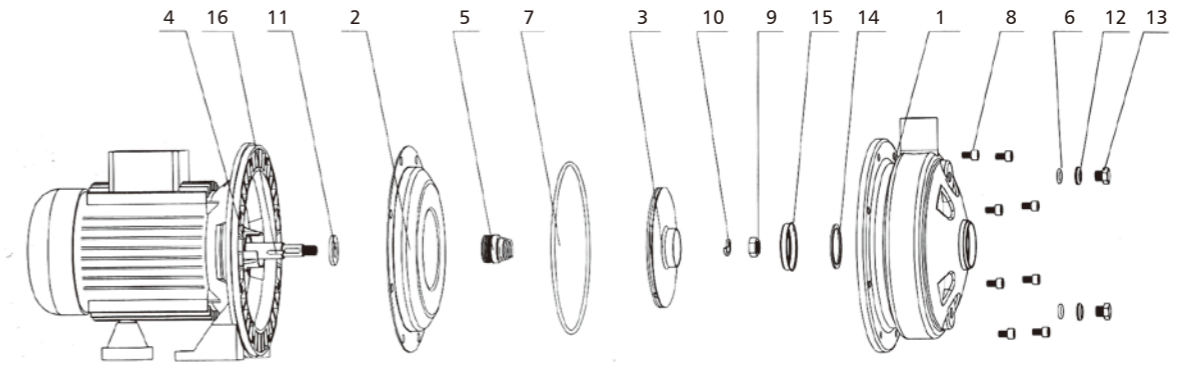
PERFORMANCE DATA

Water test based on temperature:20°C.Performance limits:ISO2548 specifications for standard class C pumps.

SERIES SWB

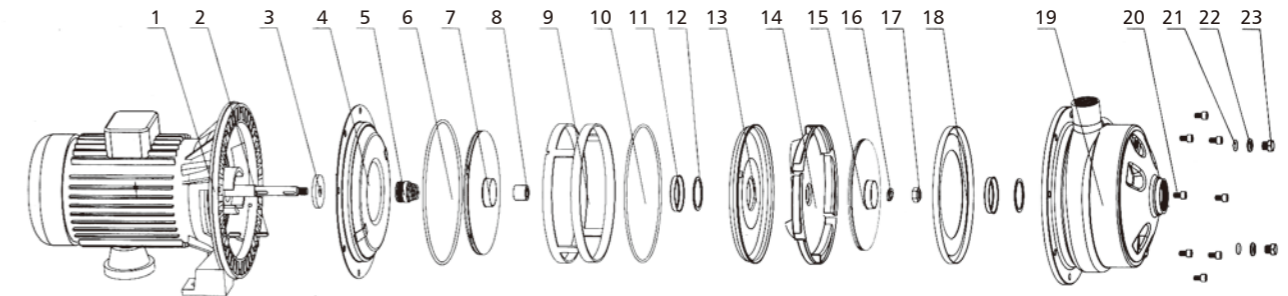
SINGLE PHASE 220V 50HZ	THREE PHASE 380V 50HZ	POWER		SUCTION HEAD M	CAPACITY Q (L/min / m³/h)														WEIGHT KG
					HEAD H (M)														
					20	40	60	80	100	120	140	160	180	200	220	240	260		
		HP	KW		1.2	2.4	3.6	4.8	6.0	7.2	8.4	9.6	10.8	12	13.2	14.4	15.6		
2SWBD70/150	2SWB70/150	2.0	1.50	8	54	52	50	47	43									17.8	
2SWBD70/185	2SWB70/185	2.5	1.85	8	61	58	56	52	48									19.6	
SWBD50/025	SWB50/025	0.33	0.25	8	9.5	8.5	7.5	6.5										5.1	
SWBD50/037	SWB50/037	0.5	0.37	8	12.	11.	10	9										6.1	
SWBD70/037	SWB70/037	0.5	0.37	8	5	5	13.5	13	11.5	10								8.1	
SWBD70/055	SWB70/055	0.75	0.55	8	16	15	17	16	15	14								8.8	
SWBD70/075	SWB70/075	1.0	0.75	8	19	18	22.5	22	20	19								10	
SWBD70/090	SWB70/090	1.2	0.90	8	25	24	27	26	24	23								11	
SWBD70/110	SWB70/110	1.5	1.10	8	29	28	31	30	28.5	27								14.6	
SWBD120/075	SWB120/075	1.0	0.75	8	33	32	27.5	17	15.8	15	14	12	11					10	
SWBD120/110	SWB120/110	1.5	1.10	8		19	25	24	23	22	21	20	18					11.6	
SWBD120/150	SWB120/150	2.0	1.50	8		26	30	29	28	27	25	24	21					15.8	
SWBD120/185	SWB120/185	2.5	1.85	8		31	35.5	34	33	32	30	28	25					17	
SWBD200/110	SWB200/110	1.5	1.10	8		37	21	20.5	20	19	18	17	16	15	13	12	9	11.6	
SWBD200/150	SWB200/150	2.0	1.50	8			25.5	25	24	23	22	21.5	21	20	18	17	15	15	
SWBD200/185	SWB200/185	2.5	1.85	8			28.5	28	27.5	27	26.5	26	25	24	23	22	21	16	

N=2800rpm



WB PART LIST

NO.	DESCRIPTION	NO.	DESCRIPTION	NO.	DESCRIPTION	NO.	DESCRIPTION
1	CASING	5	M. SEAL	9	IMPELLER NUT	13	PRIMING PLUG
2	BACK COVER	6	O-RING	10	SPRING WASHER	14	WEAR RING
3	IMPELLER	7	O-RING	11	SLINGER	15	WEAR RING GUARD
4	MOTOR	8	BOLT	12	"L" WASHER	16	KEY



2WB PART LIST

NO.	DESCRIPTION	NO.	DESCRIPTION	NO.	DESCRIPTION	NO.	DESCRIPTION
1	MOTOR	7	IMPELLER II	13	GUIDE PLATE BACK COVER	19	CASING
2	KEY	8	SHAFT SLEEVE	14	GUIDER PLATE	20	BOLT
3	SLINGER	9	POSITION RING	15	IMPELLER I	21	O RING
4	BACK COVER	10	O RING	16	SPRING WASHER	22	"L" WASHER
5	M.SEAL	11	WEAR RING GUARD	17	IMPELLER NUT	23	PRIMING/ DRAIN PLUG
6	O RING	12	WEAR RING	18	GUIDE PLATE FRONT COVER		